

MEDICAL FLATWIRES



Range of dimensions (Steel):

- Thickness (T): 0,080 – 0,400 mm / 0,0031 – 0,0157 inch
- Width (W): 0,500 – 3,500 mm / 0,0197 – 0,1377 inch
- T/W – ratio: max. 1/18

Base materials (Steel):

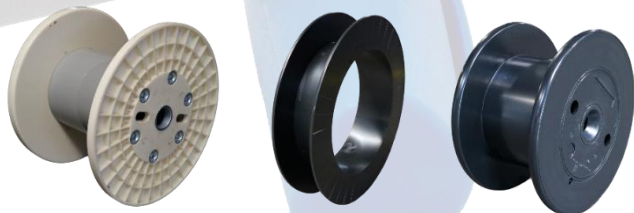
- 1.4310
- 1.4401 / 1.4404
- 1.4568
- More on request

Manufacturing process (Steel):

- Transformation by drawing and rolling of round wire to flat wire with natural round edges

Packaging solutions (Steel):

- Straight flanged spools

**Range of dimensions (NF-Metals):**

- Thickness (T): 0,020 – 0,400 mm / 0,0008 – 0,0157 inch
- Width (W): 0,500 – 4,000 mm / 0,0197 – 0,1575 inch
- T/W – ratio: max. 1/80

Base materials (NF-Metals):

- Copper (Cu) / Copper + Silver (Cu+Ag)
- Nickel (Ni)
- Aluminium (Al)
- More on request

Manufacturing process (NF-Metals):

- Transformation by drawing and rolling of round wire to flat wire with natural round or shaped edges

Packaging solutions (NF-Metals):

- Biconical or straight flanged spools

